

Cleaning the **nexus**TM ON A PUMP FED SYSTEM

Follow these cleaning instructions if the Nexus is installed on a pump-fed setup when a **pump** is **pumping** water into your Nexus.

EVOLUTION
AQUA
INNOVATION IN WATER



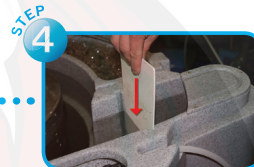
Insert cleaning pipe into the centre of the Eazy. Water level in the filter will start to rise.



Once the water level has risen to the height indicated just below the overflow, **close** the inlet valve.



Switch water pump off.



Insert inlet slide plate.



Open air valve to the **inner chamber**.



Close the air valve to the **outer chamber**.



Allow the K1 Micro in the Eazy to **agitate** for **5 minutes**.



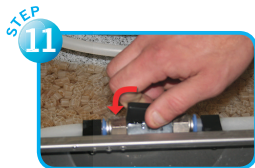
Open the larger waste valve and wait for the **inner chamber** to empty.



At this stage you may want to **hose down** any debris from underneath the Eazy.



Close the waste valve.



Open the air valve to the **outer chamber**.



Close the air valve to the **inner chamber**.



Open Nexus inlet valve.



Remove inlet slide plate and then **switch** pump **on**.



When water level rises to the same level as the **outer chamber**, **remove** the cleaning pipe.

Steps 2 to 14 should be repeated until the Eazy is clean.

PUMP FED CLEANING INSTRUCTIONS – NEXUS 220 & 320